

Lithium Iron Phosphate (LiFePO4) Battery

12V200Ah

This series is a complete solution for the Replacement of lead-acid batteries. It can be used in RV, electric mobility, Boat, home storage, backup power, UPS and Solar/wind energy storage system and other fields.

Features:

- Long cycle life
- High energy density
- Higher Power
- Fast charging
- Wider Temperature Range
- Low self-discharge rate
- Automatic protection with internal battery management system
- Support series or parallel connection, Increased Flexibility
- Maintenance free

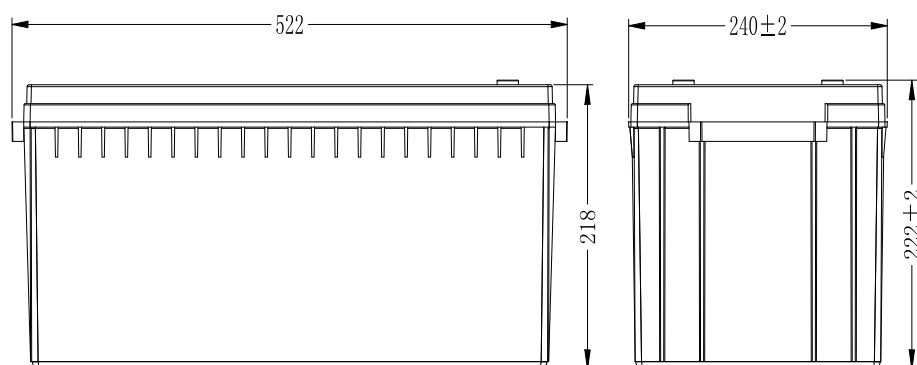
Product renderings:



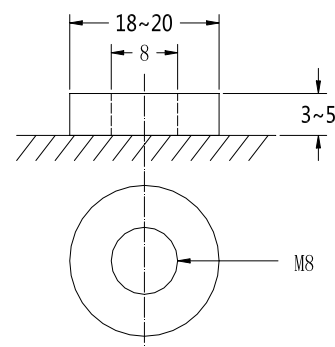
Battery Specifications:

Operating Voltage(V)	10.8~14.6
Nominal voltage(V)	12.8
Nominal Capacity(Ah)	200
Mix. capacity(Ah)	≥198
Nominal Energy(Wh)	2560
Maximum power output(W)	1280
Maximum charge voltage(V)	14.6±0.2
Float charge voltage(V)	13.5~13.8
Cut-off voltage(V)	9.6~10.8
Standard charge current(A)	40
Recommended charge current(A)	≤80
Allowed Max. charge current(A)	100
Standard discharge current(A)	40
Recommended discharge current(A)	≤100
Allowed Max. discharge current(A)	100
Peak discharge current@10S(A)	200
Internal Resistance(mΩ)	≤10
Charging temperature(°C)	0~55
Discharge temperature(°C)	-20~60
Cycles(25°C,0.5C,80%DOD)	>6000
Combination structure of battery	4S
Protection class	IP65
System weight(kg)	Approx.23
Product size(L*W*H,mm)	522*240*218
Packing size(L*W*H,mm)	595*315*300

Product dimension (Unit : mm)

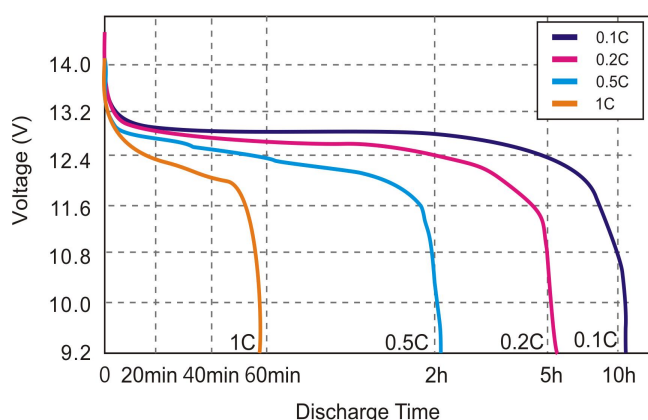


Terminal (Unit : mm):

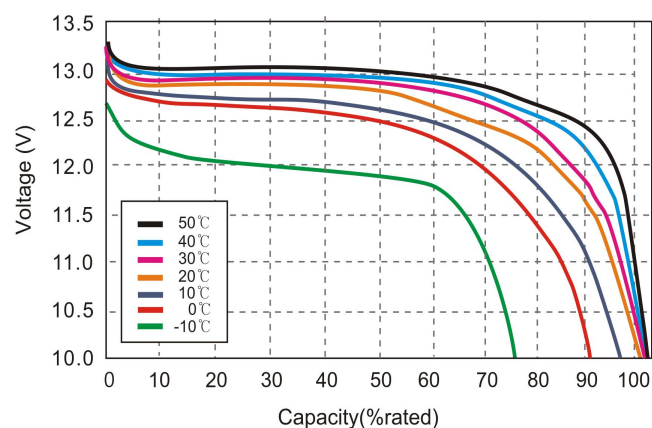


Battery Curve:

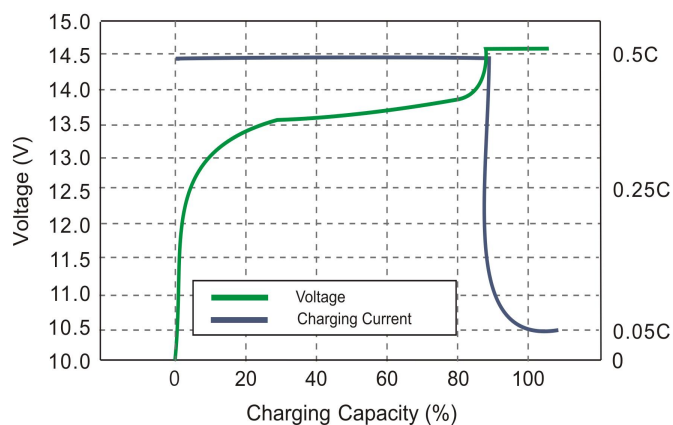
Different Rate Discharge Curve @25°C



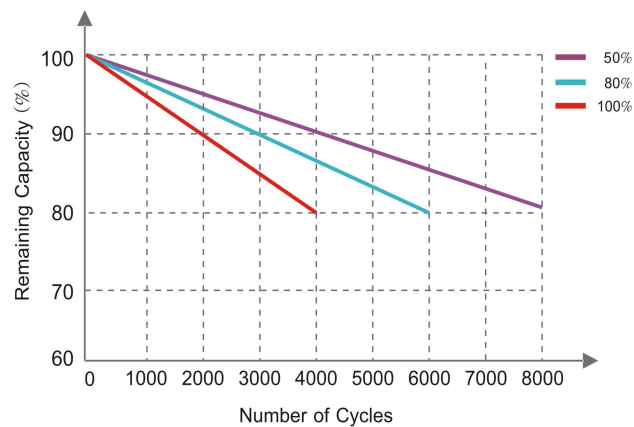
Different Temperature Discharge Curve @0.5C



Charging Characteristics @0.5C 25°C



Different DOD Discharge Cycle Life Curve



With process improvements and product upgrades, the product parameters are subject to change without prior notice

Version : 202309